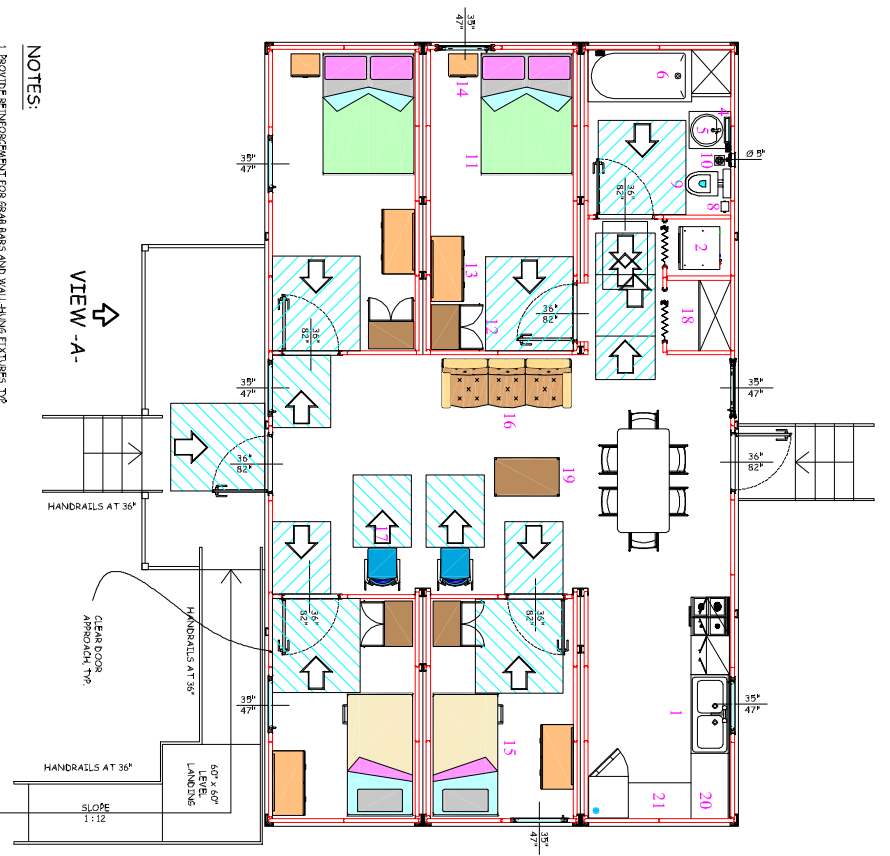


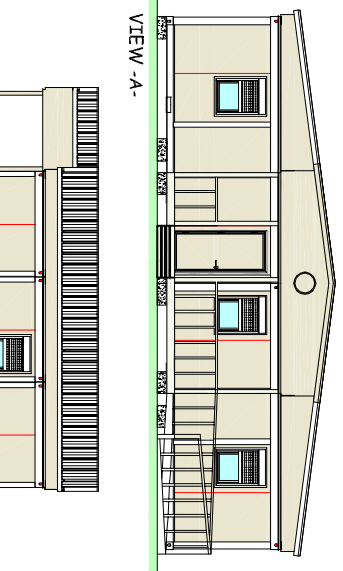
ENLARGED RESTROOM PLAN

ENLARGED KITCHEN PLAN



VIEW - B -

VIEW - A -



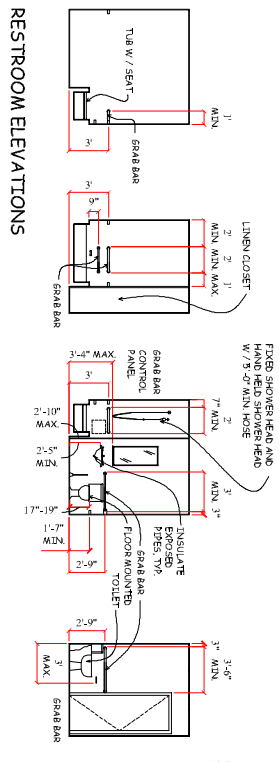
VIEW - A -

VIEW - B -

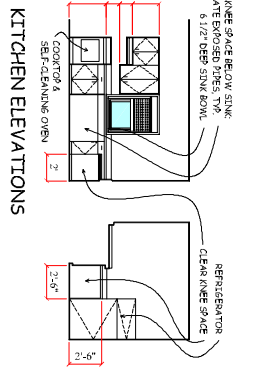
**LEGEND**

ITEM	DESCRIPTION
1	Kitchen Area
2	Washer Dryer (Stackable)
3	Water Heater
4	Mirror with Shelf
5	Wash Basin
6	Bath
7	Soap Dish
8	Paper Holder
9	Toilet
10	Toilet Brush
11	Queen Bed
12	Wardrobe
13	Drawer Chest
14	Night Table
15	Bank Bed
16	Sofa
17	Chair
18	Shelves
19	Table
20	34" Sink Counter
21	30" Work Counter

- NOTES:**
1. PROVIDE REINFORCEMENT FOR GRAB BARS AND WALL-HUNG FIXTURES TYP.
  2. HANDVADE SWITCHES, FAULTZ CONTROLS AND APPLIANCE HANDLES TO BE OPERABLE WITH CLOSED FIRST TYP.
  3. GRAB BARS TO BE 1 1/2" TYP.
  4. GRAB BARS TO BE MOUNTED 1 1/2" AWAY FROM THE ADJACENT WALL TYP.
  5. AT THE OVEN / COOKTOP LOCATE THE CONTROLS TO REMAIN TYP WITHOUT REPAIRING ACROSS THE BURNERS.
  6. LOCATE DOOR PULLS FOR UPPER WALL CABINETS AS CLOSE TO THE BOTTOM OF THE CABINET DOORS AS POSSIBLE.
  7. LOCATE DOOR PULLS FOR BASE CABINETS AS CLOSE TO THE TOP OF THE CABINET DOORS AS POSSIBLE.
  8. ALL SWITCHES AND CONTROLS TO BE NO GREATER THAN 48" ABOVE THE FINISH.



RESTROOM ELEVATIONS



KITCHEN ELEVATIONS

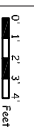
REV	DESCRIPTION	DRAWN	CHECKED	DATE

**Silver Coastal Developers**  
 6925 Burnett, Houston, Texas 77021  
 www.silvercoastal.com  
 Ph. 713.748.0463 | Fax. 713.748.0472

**Title:** 4 BEDROOM - SPECIAL NEEDS -  
**Subject:** PLAN & VIEWS

DWG. N° P505/06/AR/003-2  
 SCALE: 1/8" = 1'-0"  
 REF. FILE: P505/001-100/CNF-16/540  
 PL & V-10/03/06

For more information contact Mike Adams c. 713.565.7125



0 1 2 3 4 Feet